

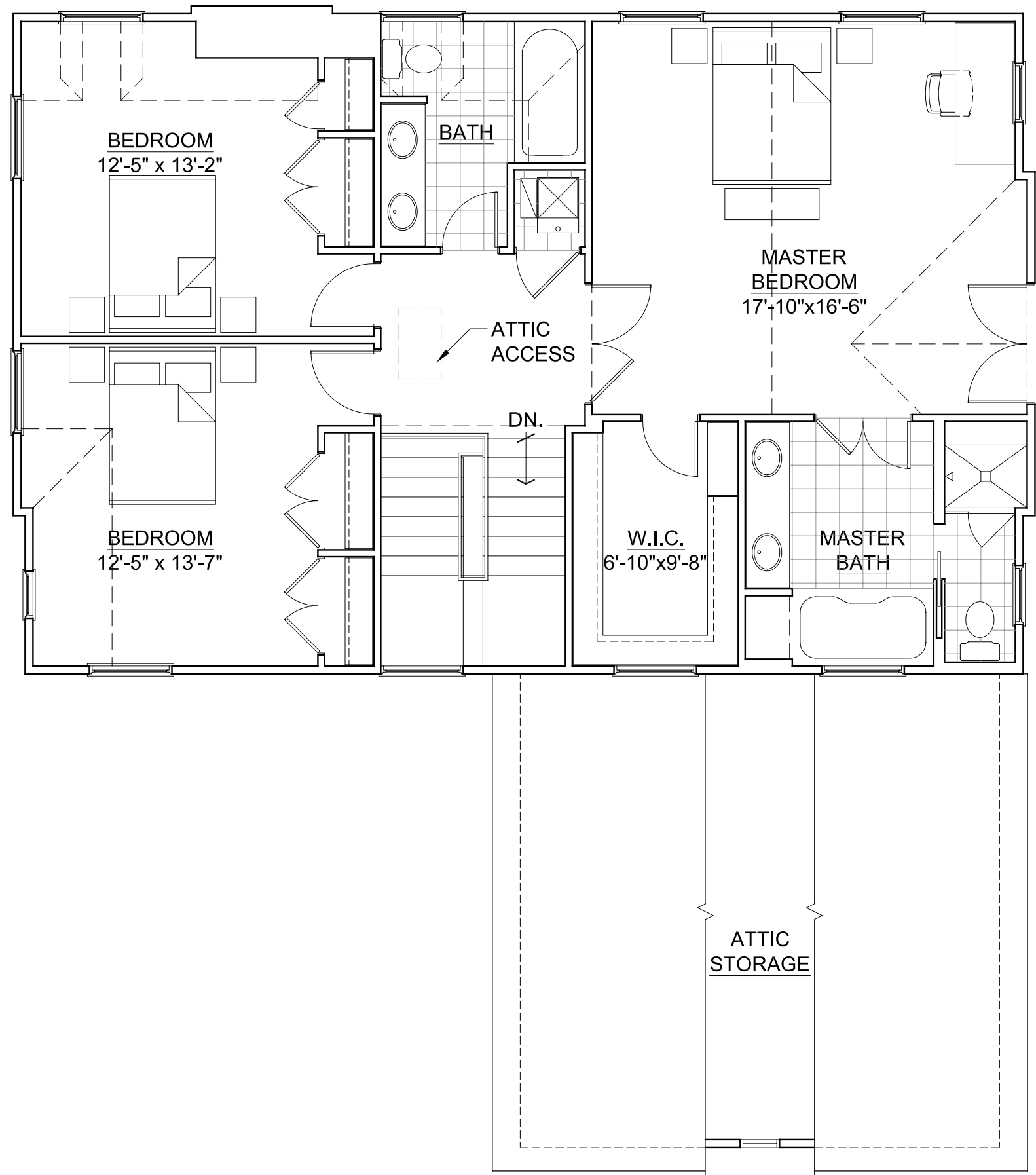
F.A.R. SUMMARY	
LOWER LEVEL:	0 S.F.
FIRST LEVEL:	1,637 S.F.
SECOND LEVEL:	1,207 S.F.
BONUS (GARAGE):	- 200 S.F.
BONUS (BAY):	- 62 S.F.
TOTAL:	2,582 S.F.

325 ADAMS AVENUE
 317 - 325 ADAMS AVENUE
 GLENCOE, ILLINOIS

FIRST LEVEL PLAN
 3/16" = 1'-0"
 03/29/05



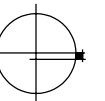
716 VERNON AVENUE
 GLENCOE, ILLINOIS 60022
 TELEPHONE 847-835-7081
 FACSIMILE 847-835-7082



325 ADAMS AVENUE
 317 - 325 ADAMS AVENUE
 GLENCOE, ILLINOIS

SECOND LEVEL PLAN

3/16" = 1'-0"
 03/29/05



MYEFSKI
 COOK
 ARCHITECTS, INC.
 716 VERNON AVENUE
 GLENCOE, ILLINOIS 60022
 TELEPHONE 847-835-7081
 FACSIMILE 847-835-7082



325 ADAMS AVENUE
317 - 325 ADAMS AVENUE
GLENCOE, ILLINOIS

SOUTH ELEVATION

3/16" = 1'-0"
03/29/05



716 VERNON AVENUE
GLENCOE, ILLINOIS 60022
TELEPHONE 847-835-7081
FACSIMILE 847-835-7082

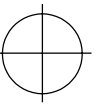


325 ADAMS AVENUE

317 - 325 ADAMS AVENUE
GLENCOE, ILLINOIS

EAST ELEVATION

3/16" = 1'-0"
03/29/05



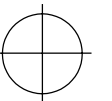
716 VERNON AVENUE
GLENCOE, ILLINOIS 60022
TELEPHONE 847-835-7081
FACSIMILE 847-835-7082



325 ADAMS AVENUE
317 - 325 ADAMS AVENUE
GLENCOE, ILLINOIS

NORTH ELEVATION

3/16" = 1'-0"
03/29/05



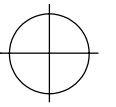
716 VERNON AVENUE
GLENCOE, ILLINOIS 60022
TELEPHONE 847-835-7081
FACSIMILE 847-835-7082



325 ADAMS AVENUE
317 - 325 ADAMS AVENUE
GLENCOE, ILLINOIS

WEST ELEVATION

3/16" = 1'-0"
03/29/05



716 VERNON AVENUE
GLENCOE, ILLINOIS 60022
TELEPHONE 847-835-7081
FACSIMILE 847-835-7082