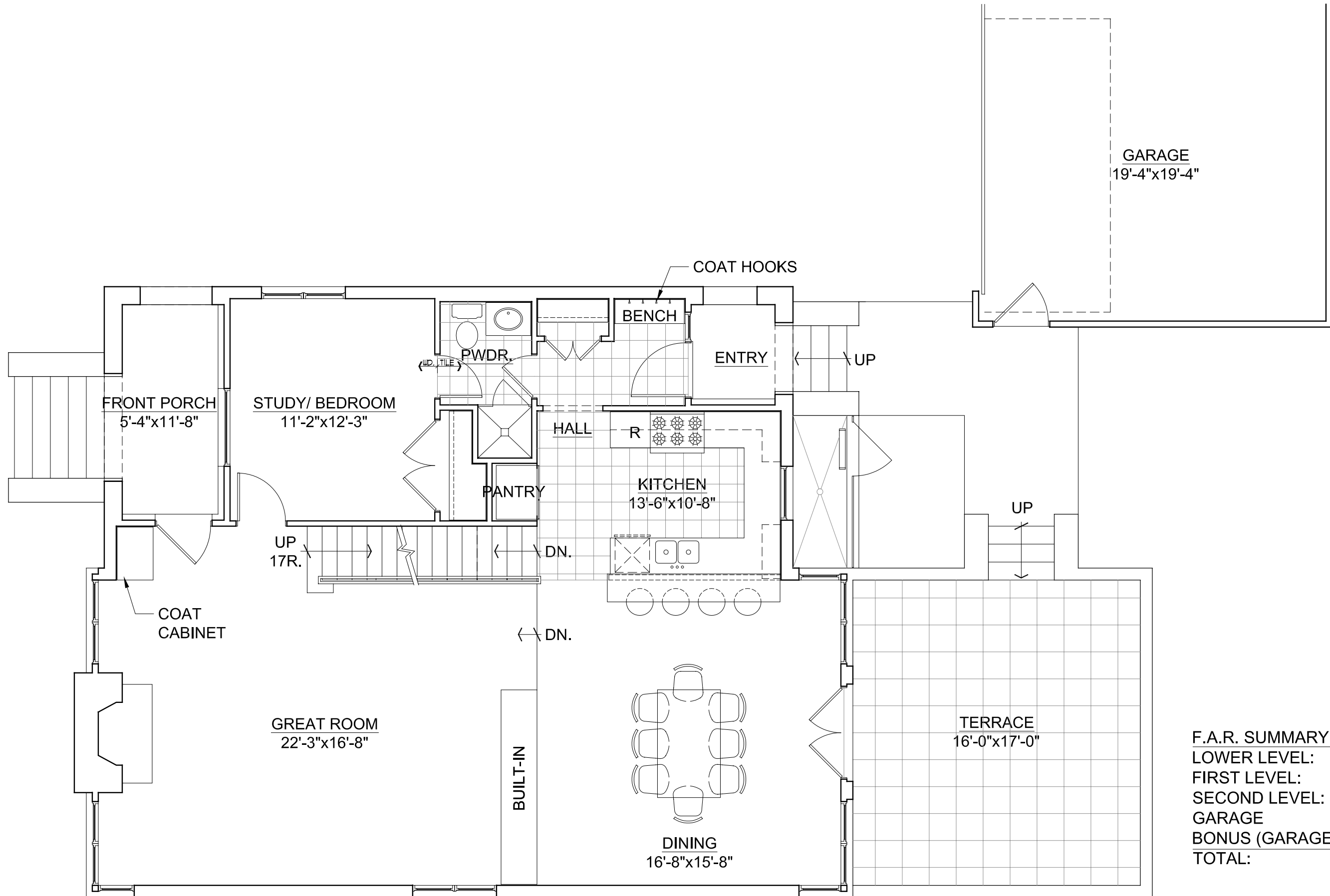


FNUE
GLENCOE, ILLINOIS

LOWER LEVEL PLAN
3/16" = 1'-0"
03/29/05





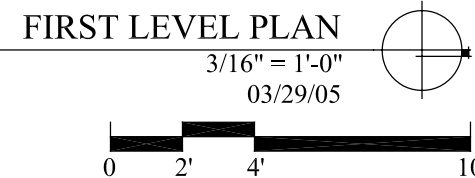
F.A.R. SUMMARY

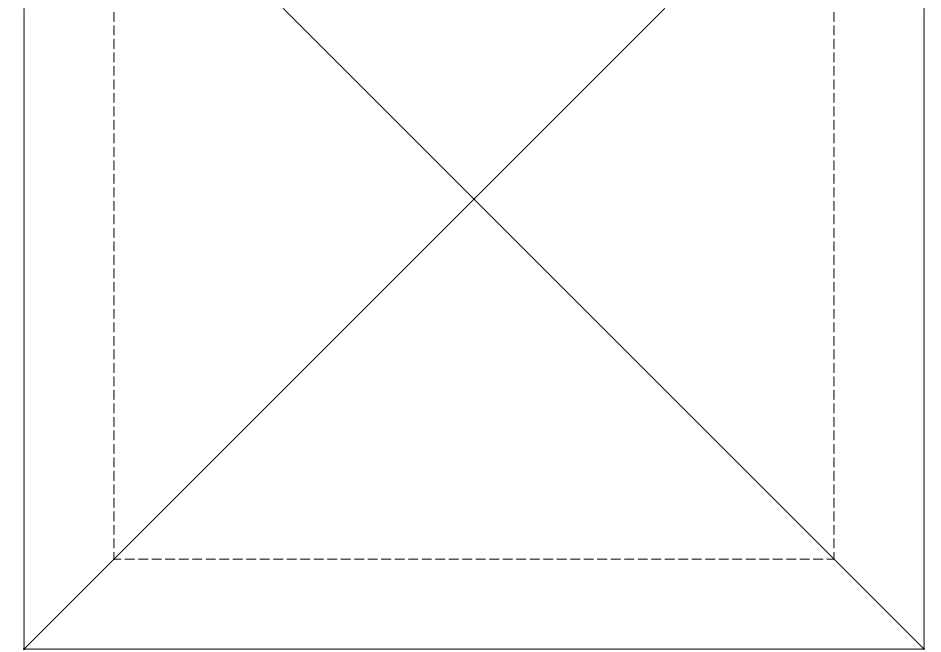
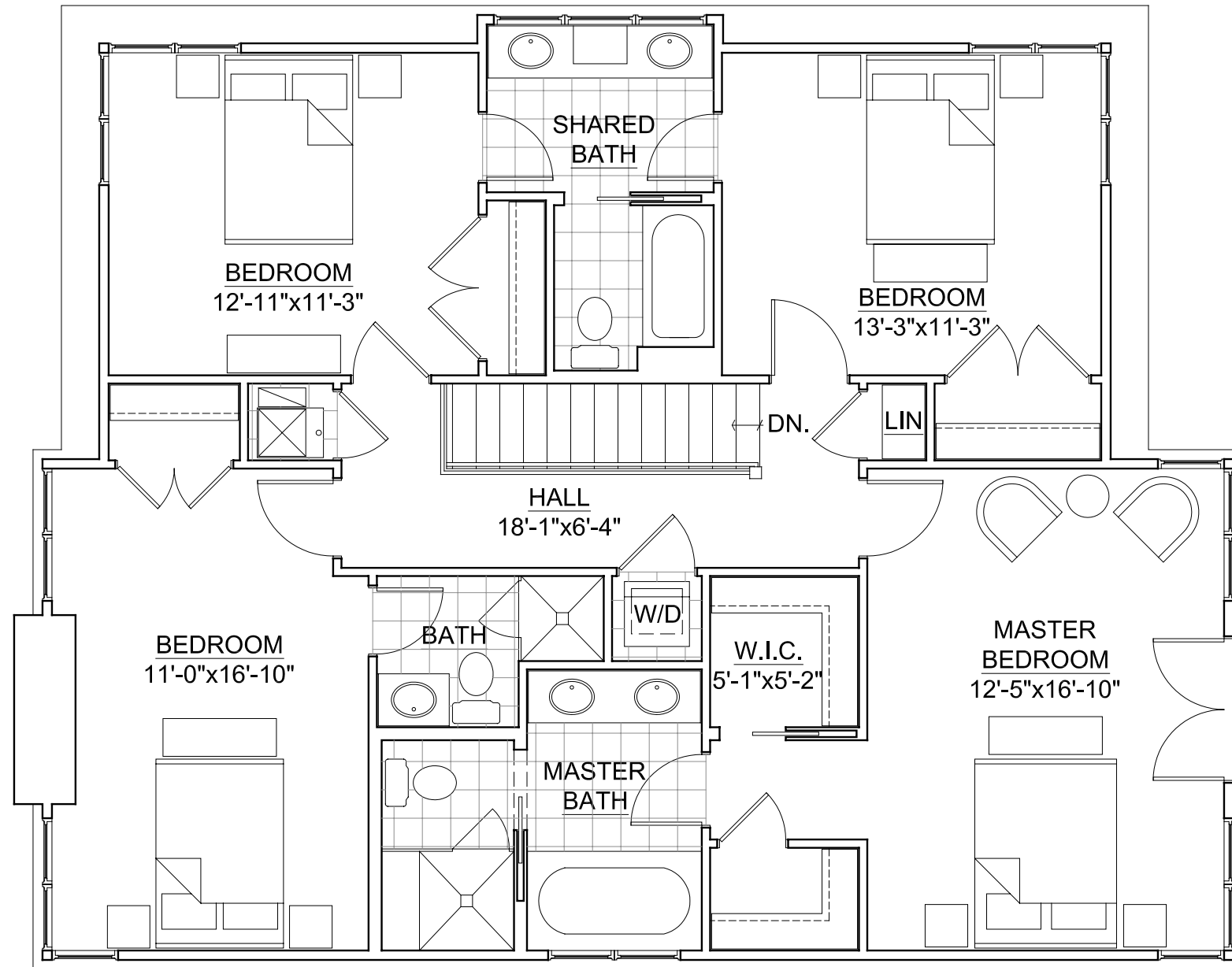
LOWER LEVEL:	0 S.F.
FIRST LEVEL:	1,308 S.F.
SECOND LEVEL:	1,289 S.F.
GARAGE	400 S.F.
BONUS (GARAGE):	- 400 S.F.
TOTAL:	2,597 S.F.



716 VERNON AVENUE
 GLENCOE, ILLINOIS 60022
 TELEPHONE 847-835-7081
 FACSIMILE 847-835-7082

319 ADAMS AVENUE
 317 - 325 ADAMS AVENUE
 GLENCOE, ILLINOIS



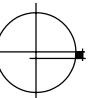


716 VERNON AVENUE
 GLENCOE, ILLINOIS 60022
 TELEPHONE 847-835-7081
 FACSIMILE 847-835-7082

319 ADAMS AVENUE
 317-325 ADAMS AVENUE
 GLENCOE, ILLINOIS

SECOND LEVEL PLAN

3/16" = 1'-0"
 03/29/05

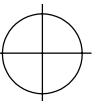




319 ADAMS AVENUE
317 - 325 ADAMS AVENUE
GLENCOE, ILLINOIS

SOUTH ELEVATION

3/16" = 1'-0"
03/29/05



716 VERNON AVENUE
GLENCOE, ILLINOIS 60022
TELEPHONE 847-835-7081
FACSIMILE 847-835-7082

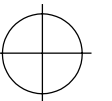


716 VERNON AVENUE
GLENCOE, ILLINOIS 60022
TELEPHONE 847-835-7081
FACSIMILE 847-835-7082

319 ADAMS AVENUE
317 - 325 ADAMS AVENUE
GLENCOE, ILLINOIS

EAST ELEVATION

3/16" = 1'-0"
03/29/05



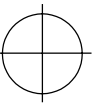


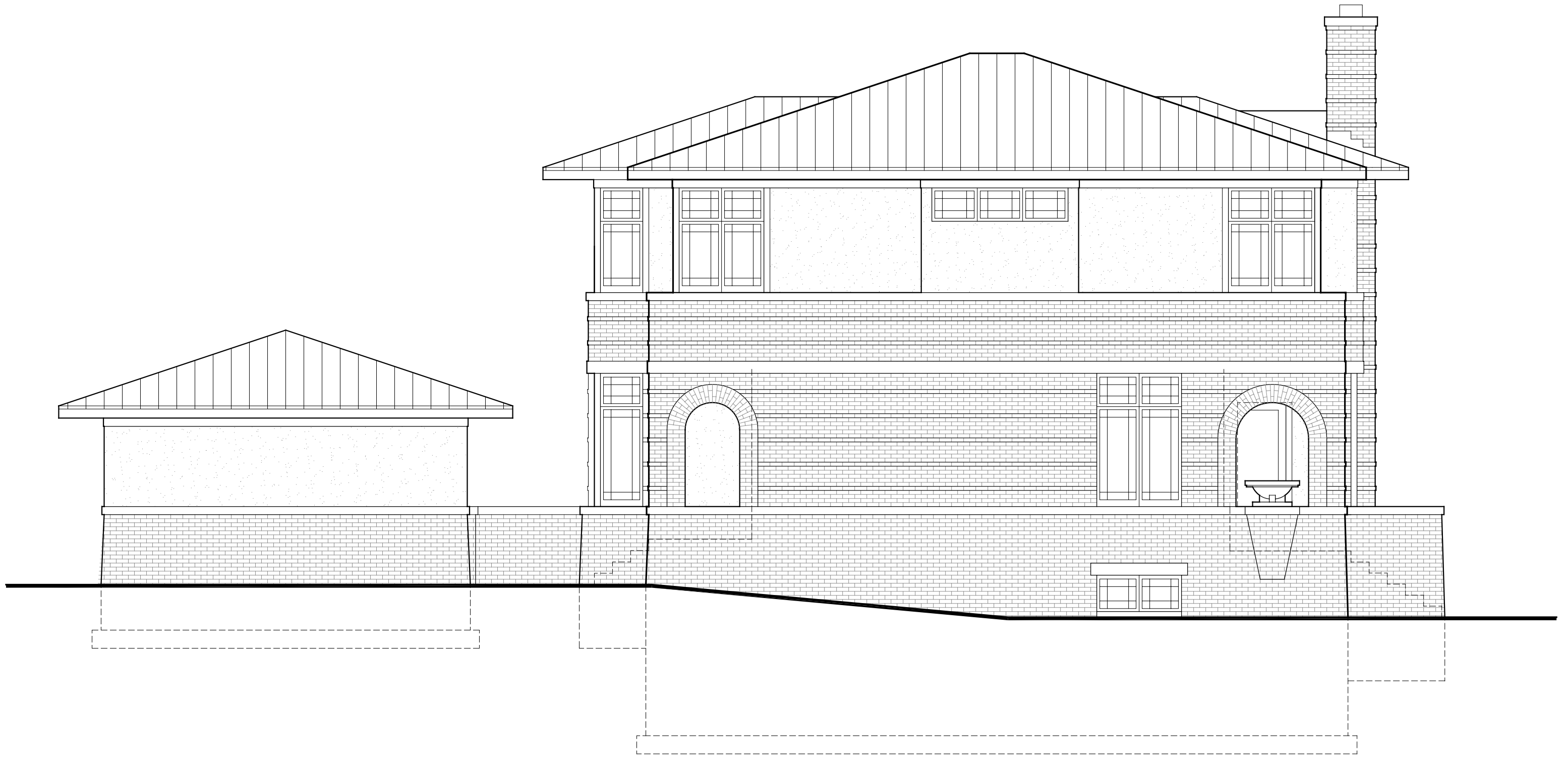
716 VERNON AVENUE
GLENCOE, ILLINOIS 60022
TELEPHONE 847-835-7081
FACSIMILE 847-835-7082

319 ADAMS AVENUE
317 - 325 ADAMS AVENUE
GLENCOE, ILLINOIS

NORTH ELEVATION

3/16" = 1'-0"
03/29/05





716 VERNON AVENUE
GLENCOE, ILLINOIS 60022
TELEPHONE 847-835-7081
FACSIMILE 847-835-7082

319 ADAMS AVENUE
317 - 325 ADAMS AVENUE
GLENCOE, ILLINOIS

WEST ELEVATION

3/16" = 1'-0"
03/29/05

