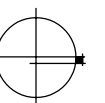


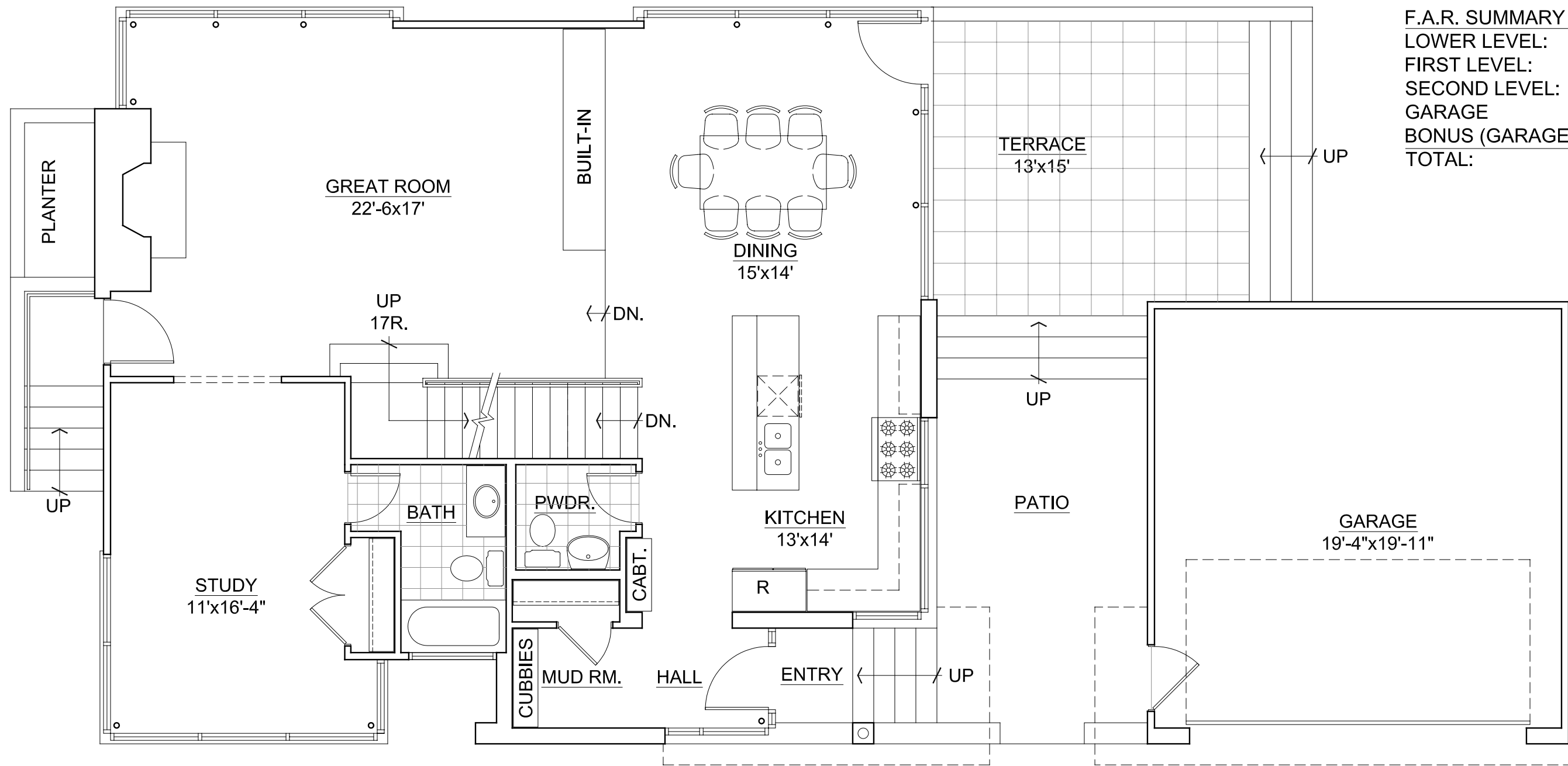
716 VERNON AVENUE
 GLENCOE, ILLINOIS 60022
 TELEPHONE 847-835-7081
 FACSIMILE 847-835-7082

317 ADAMS AVENUE
 317 - 325 ADAMS AVENUE
 GLENCOE, ILLINOIS

LOWER LEVEL PLAN

3/16" = 1'-0"
 03/29/05





F.A.R. SUMMARY	
LOWER LEVEL:	0 S.F.
FIRST LEVEL:	1,346 S.F.
SECOND LEVEL:	1,197 S.F.
GARAGE	420 S.F.
BONUS (GARAGE):	- 400 S.F.
TOTAL:	2,563 S.F.

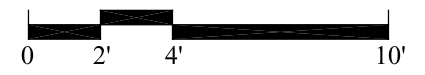
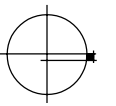


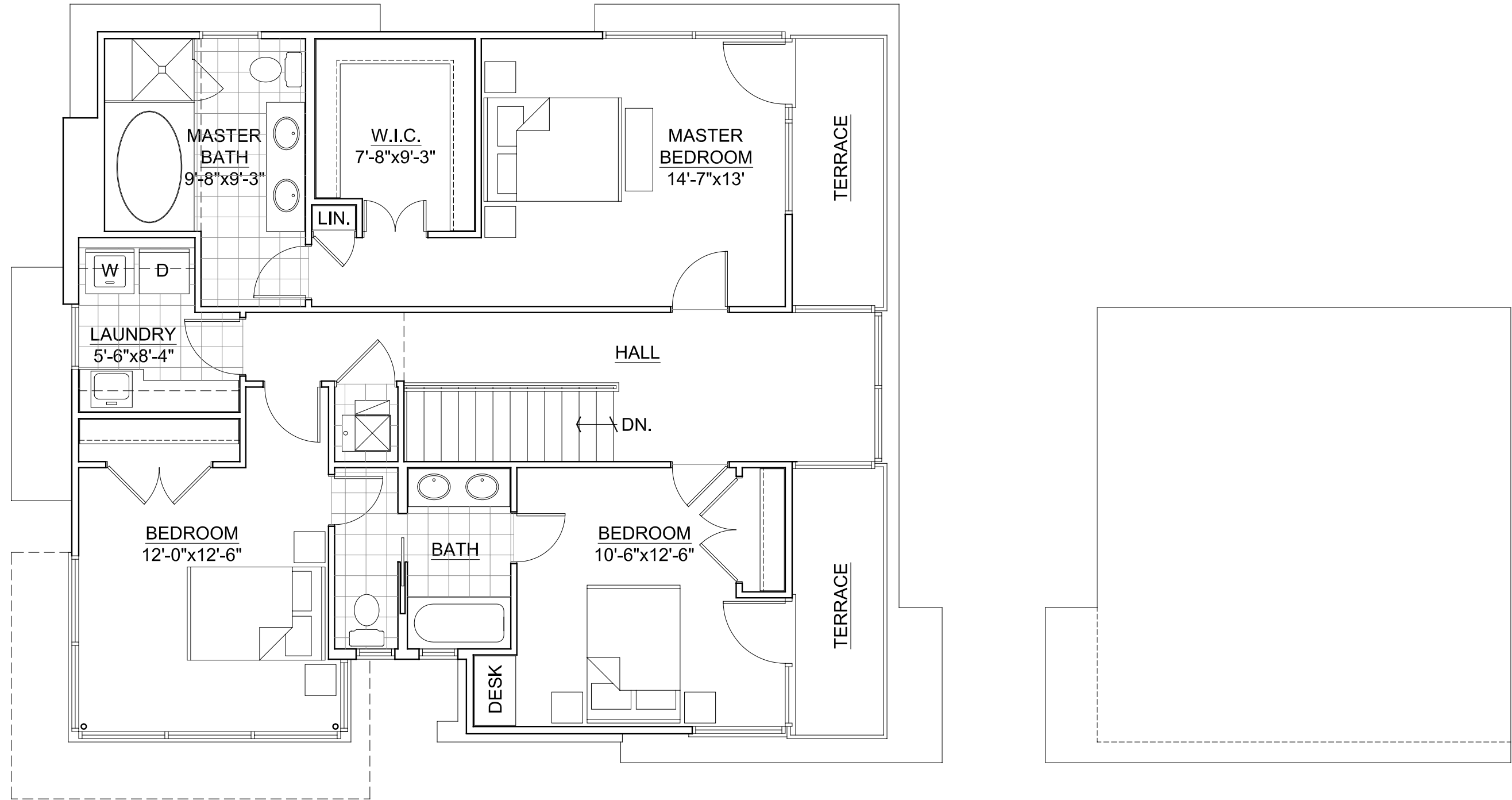
716 VERNON AVENUE
 GLENCOE, ILLINOIS 60022
 TELEPHONE 847-835-7081
 FACSIMILE 847-835-7082

317 ADAMS AVENUE
 317 - 325 ADAMS AVENUE
 GLENCOE, ILLINOIS

FIRST LEVEL PLAN

3/16" = 1'-0"
 03/29/05





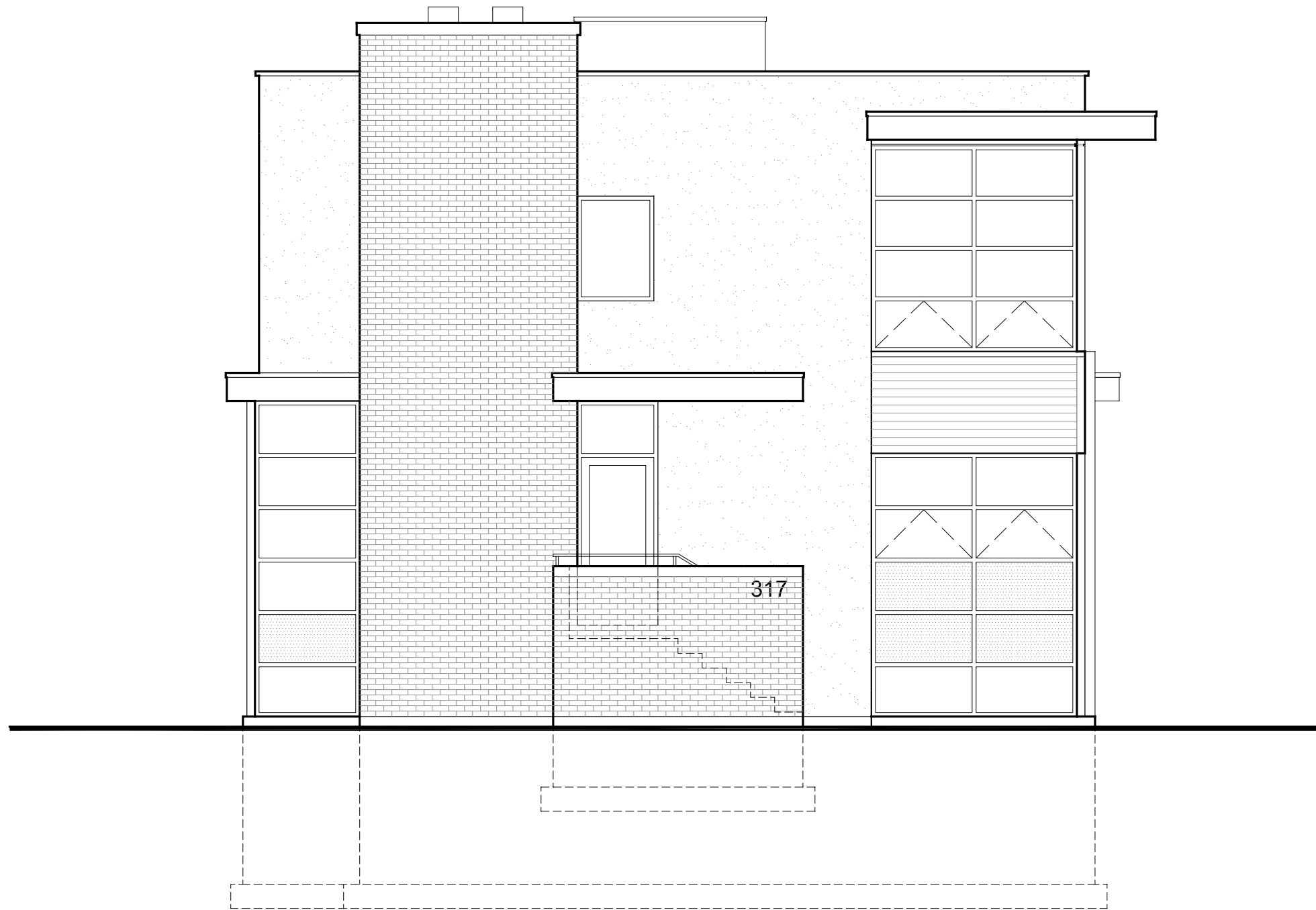
716 VERNON AVENUE
 GLENCOE, ILLINOIS 60022
 TELEPHONE 847-835-7081
 FACSIMILE 847-835-7082

317 ADAMS AVENUE
 317-325 ADAMS AVENUE
 GLENCOE, ILLINOIS

SECOND LEVEL PLAN

3/16" = 1'-0"
 03/29/05



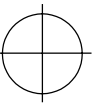


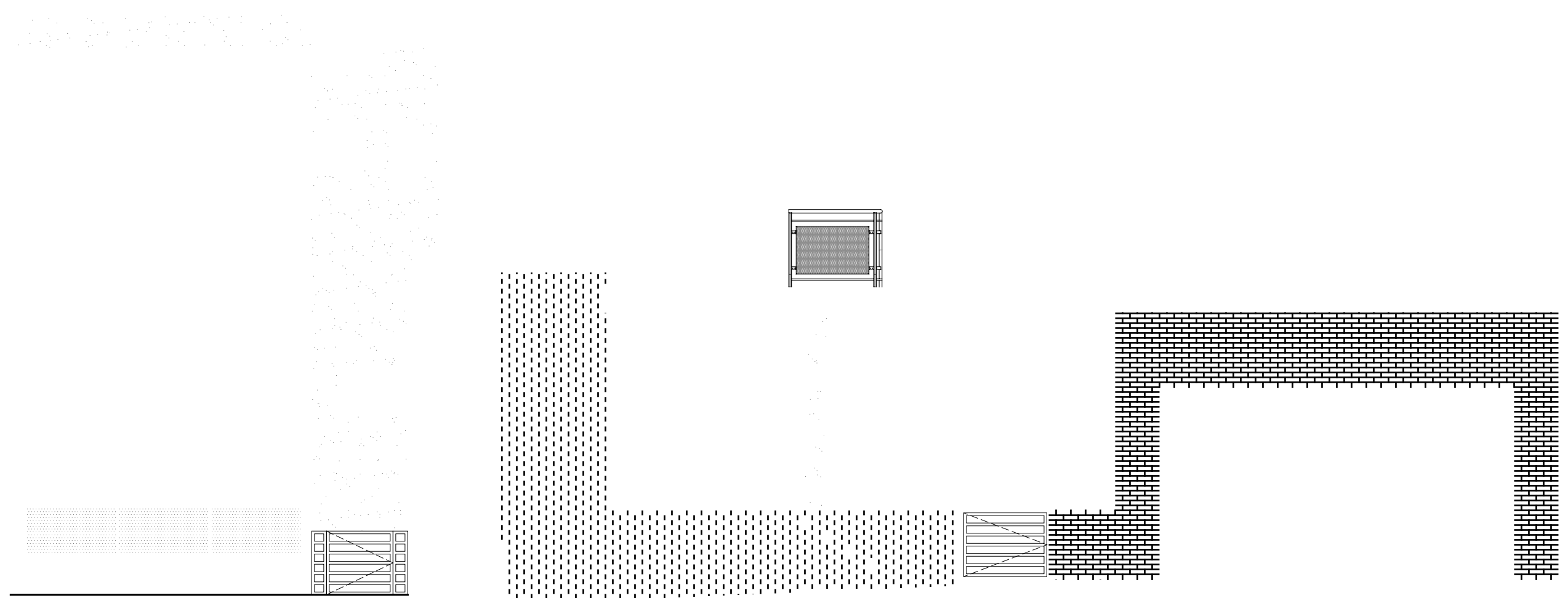
716 VERNON AVENUE
GLENCOE, ILLINOIS 60022
TELEPHONE 847-835-7081
FACSIMILE 847-835-7082

317 ADAMS AVENUE
317 - 325 ADAMS AVENUE
GLENCOE, ILLINOIS

SOUTH ELEVATION

3/16" = 1'-0"
03/29/05

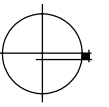


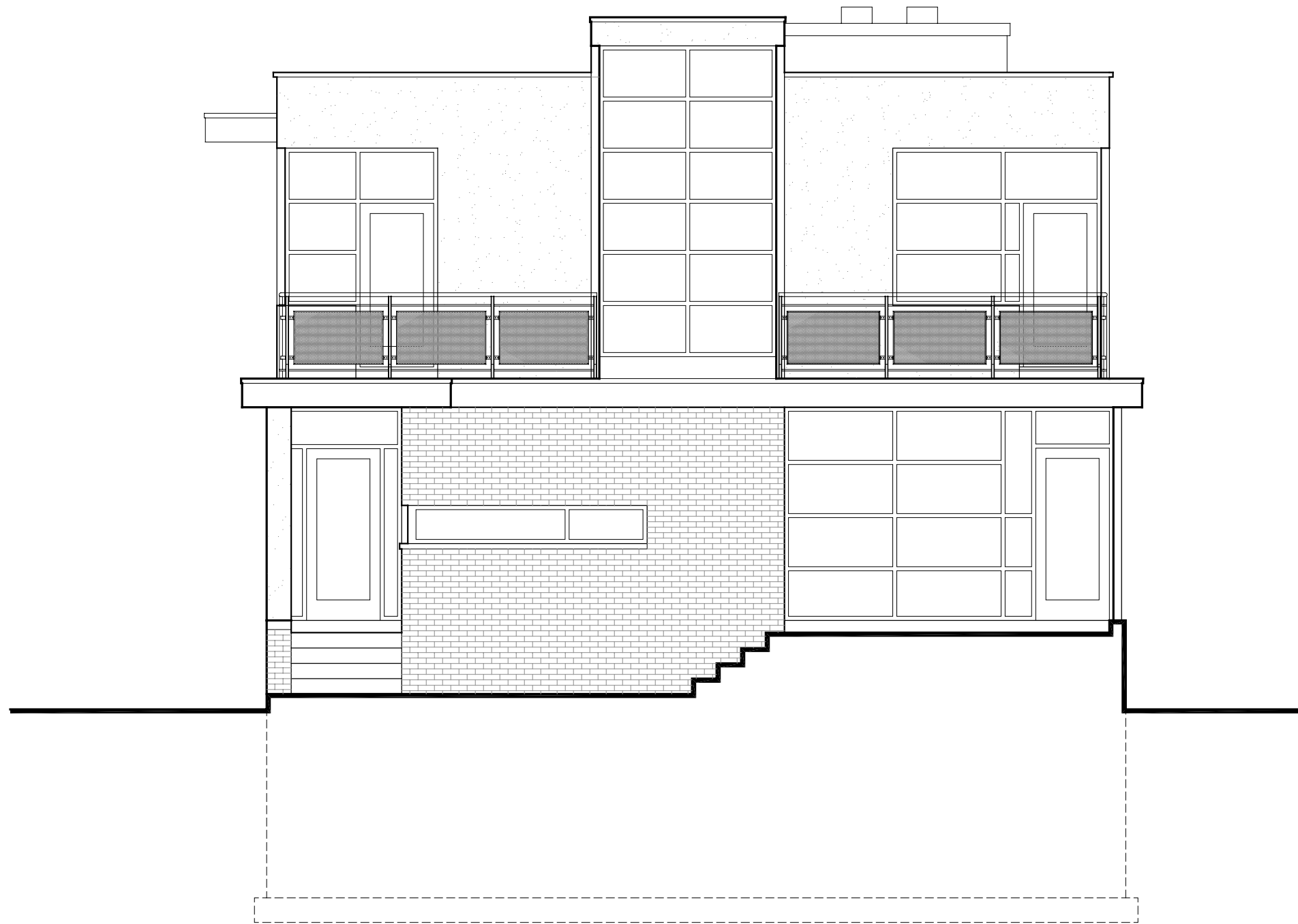


317 ADAMS AVENUE
317 -325 ADAMS AVENUE
GLENCOE, ILLINOIS

EAST ELEVATION

3/16" = 1'-0"
03/29/05

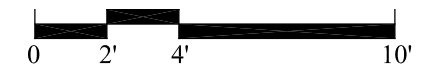
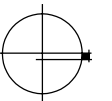




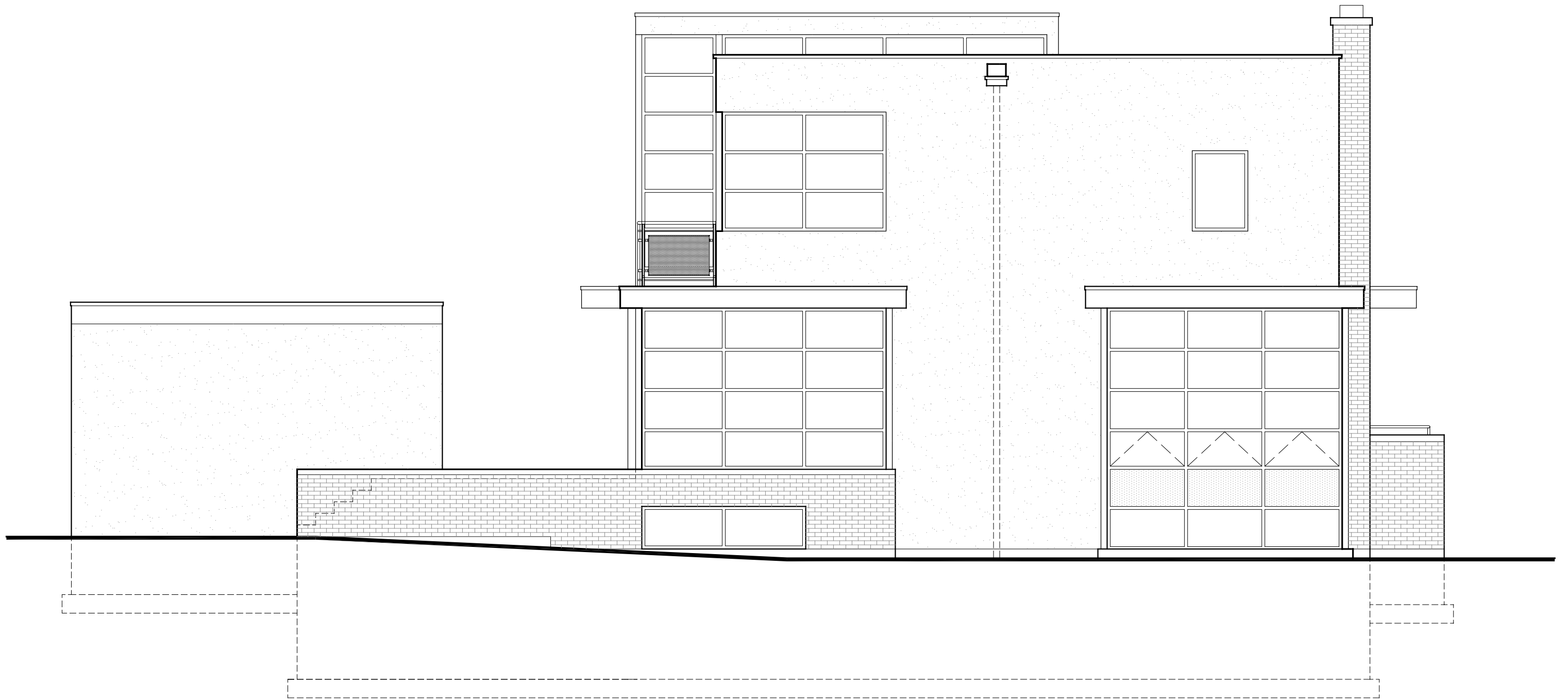
317 ADAMS AVENUE
317 - 325 ADAMS AVENUE
GLENCOE, ILLINOIS

NORTH ELEVATION

3/16" = 1'-0"
03/29/05



716 VERNON AVENUE
GLENCOE, ILLINOIS 60022
TELEPHONE 847-835-7081
FACSIMILE 847-835-7082



**MYEFSKI
COOK
ARCHITECTS, INC.**
716 VERNON AVENUE
GLENCOE, ILLINOIS 60022
TELEPHONE 847-835-7081
FACSIMILE 847-835-7082

317 ADAMS AVENUE
317 - 325 ADAMS AVENUE
GLENCOE, ILLINOIS

WEST ELEVATION

3/16" = 1'-0"
03/29/05

